

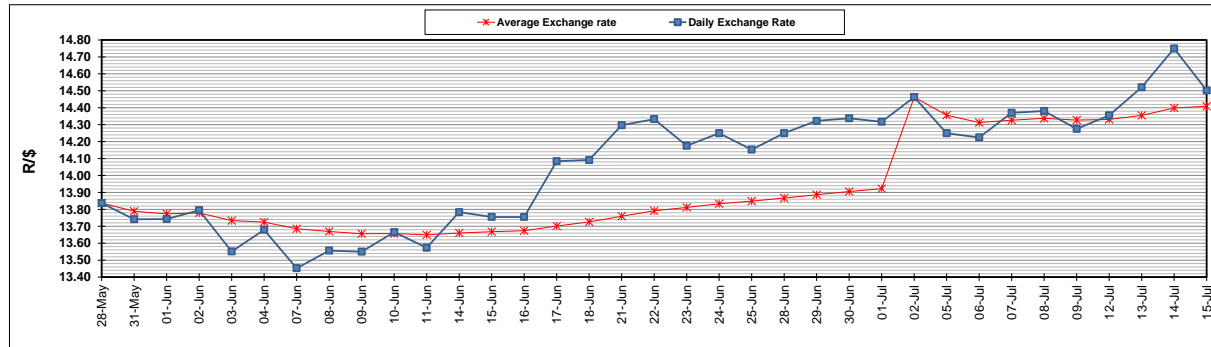
	PETROL 95 ULP	PETROL 93 ULP & LRP	DIESEL 0.05%	DIESEL 0.005%	ILL. PAR.
GAUTENG PUMP PRICE (SA c/l) AS FROM 07/07/2021	1,739.000	1,720.000	-	-	-
WHOLESALE PRICE (SA c/l) AS FROM 07/07/2021	-	-	1,508.620	1,512.020	913.488
SINGLE NATIONAL MAXIMUM RETAIL PRICE	-	-	-	-	1,150.000
BASIC FUEL PRICE - 15/07/2021 (SA c/l)	822.143	809.572	760.877	762.851	740.254
PRESS RELEASE CONTRIBUTION TO BFP 07/07/2021 - 15/07/2021 (SA c/l)	743.170	734.170	721.630	725.030	700.128
UNIT OVER/(UNDER) RECOVERY - 15/07/2021 (SA c/l)	(78.973)	(75.402)	(39.247)	(37.821)	(40.126)
AVERAGE BASIC FUEL PRICE 02/07/2021 - 15/07/2021	821.285	807.885	764.708	767.456	743.306
AVERAGE UNIT OVER/(UNDER) RECOVERY 02/07/2021 - 15/07/2021	(85.915)	(82.415)	(55.678)	(54.726)	(53.978)

ANALYSIS MOVEMENT OF AVERAGE OVER/(UNDER) RECOVERY

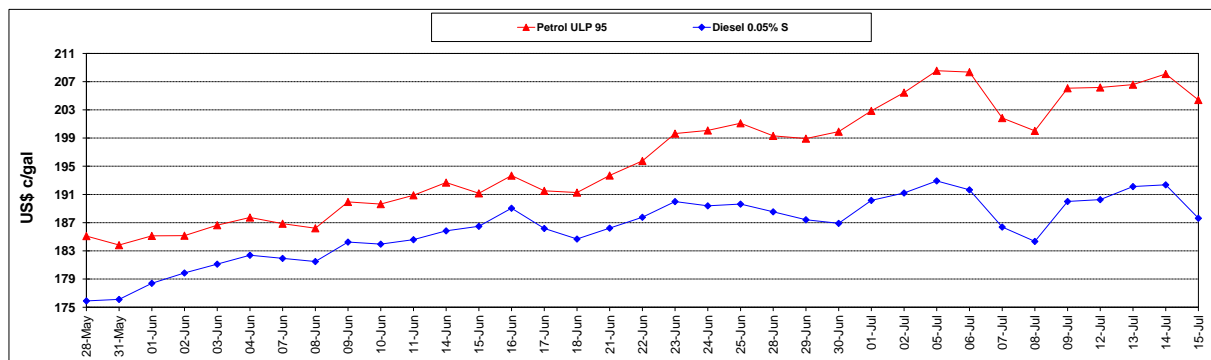
	PETROL 95	PETROL 93	DIESEL 0.05%	DIESEL 0.005%	ILL. PAR.
- MOVEMENT IN INTERNATIONAL PRODUCT PRICES	(58.151)	(55.104)	(29.827)	(28.782)	(28.850)
- MOVEMENT IN EXCHANGE RATE	(27.764)	(27.311)	(25.851)	(25.944)	(25.128)
AVERAGE UNIT OVER/(UNDER) RECOVERY 02/07/2021 - 15/07/2021	(85.915)	(82.415)	(55.678)	(54.726)	(53.978)

R/\$ EXCHANGE RATE - (R/\$14.5023- 15/07/2021)

EXCHANGE RATE USED IN BASIC FUEL PRICE



INTERNATIONAL PRODUCT PRICES OF BASKET USED IN BASIC FUEL PRICE



BASIC FUEL PRICE IN SA CENTS PER LITRE

